



**LYNX TELESCOPIC**  
WALL SYSTEMS™

ZONA®

CUSTOMIZED FUNCTION, AESTHETIC CONSISTENCY

LYNX TELESCOPIC WALL SYSTEMS

# SEPARATE SPACE IN **STYLE**

ZONA GLASS WALL SYSTEMS



## Why LYNX?

**LYNX TELESCOPIC** is the premium multi-panel sliding glass wall solution. Combining ease of operation and ultimate design flexibility, LYNX systems deliver customized function with aesthetic consistency. Available in a variety of configurations, finishes, and sizes, all LYNX Systems come standard with a consistent 1 1/2" aluminum profile, allowing for seamless integration throughout the ZONA product lines.

Proudly made in the USA, all ZONA Glass Wall Systems come with a comprehensive 5-year limited warranty, providing peace of mind and long-term performance reliability.



# System Thresholds

## Product Specifications

<b>NOMINAL GLASS THICKNESS</b>	$\frac{3}{8}$ " or $\frac{1}{2}$ "
<b>MAX. PANEL WEIGHT</b>	260 lbs
<b>MAX. PANEL HEIGHT</b>	120"
<b>MAX. PANEL WIDTH</b>	48"
<b>INTERLOCK WIDTH</b>	1 $\frac{1}{2}$ "
<b>ALLOWABLE DEFLECTION</b>	$\frac{1}{8}$ " per 12' (ASTM E557)
<b>MAXIMUM FLOOR VARIANCE</b>	$\frac{3}{8}$ " (Non-cumulative)



**Note:** Max panel weight will dictate allowable heights and widths depending on glass selection.



## Features & Benefits

### Narrow Sightlines

Maximize your clear view with 1 1/2" panel interlocks and extrusion profiles.

### Flexible Configurations

Choose the system that best fits your space with customizable layouts.

### Design Consistency

Easily complement any single glazed, double glazed, or adjacent product.

### Ease of Operation

Optimize your space with quick and efficient setup.

### No Floor Track

Eliminate unsightly floor tracks with a top supported system.

### Maximize Natural Light

Improve mood, reduce stress, and create a more positive environment with increased daylighting.

## System Components

1 Track



2 Trolley



3 1 1/2 Profile



4 Recessed Pull



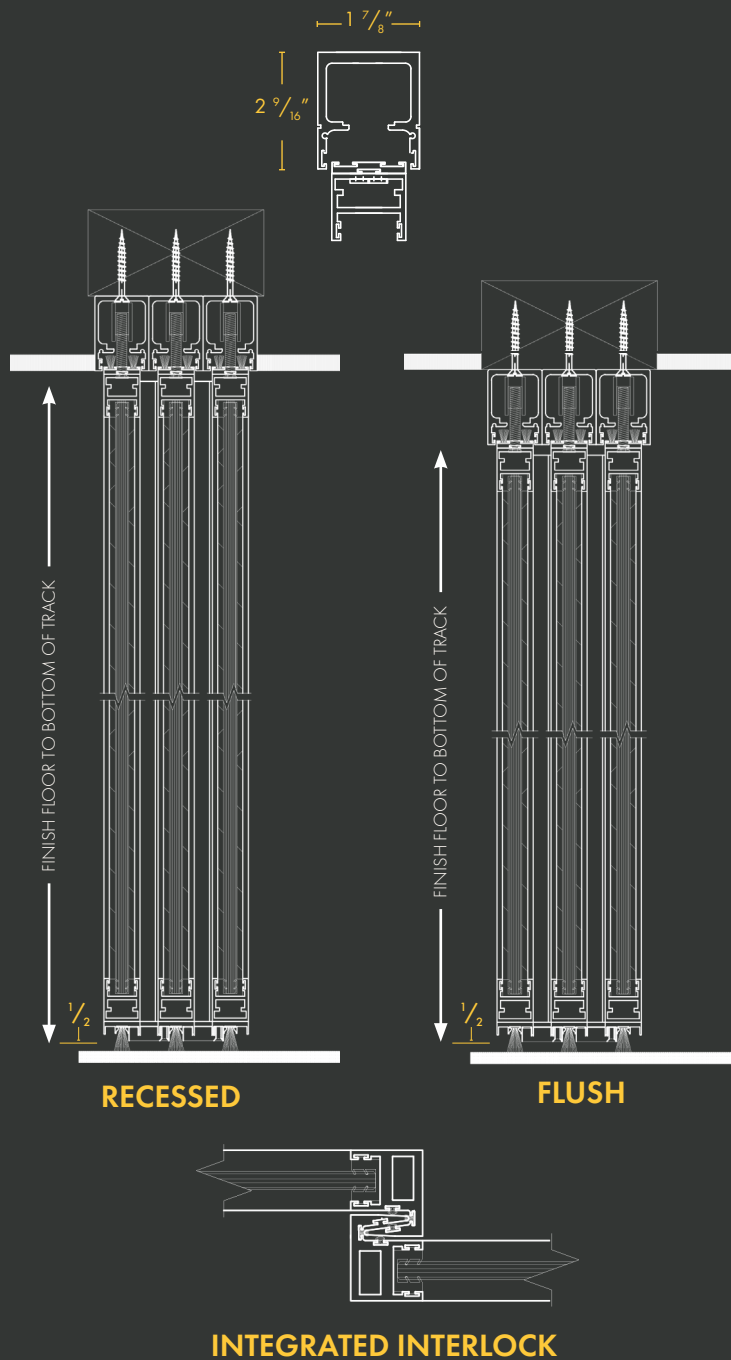
5 Solid Corner Block



6 Internal Footbolt



# Track Details



## Finishes

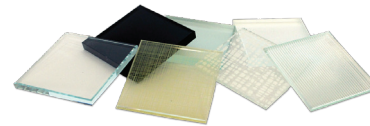
Standard Frame & Door Panel Finishes (AAMA 2604 Powder Coat)



Also available in a wide array of custom powder coated RAL Colors and Anodized Finishes.

## Glass Options

ZONA Glass Wall Systems can incorporate a variety of glass types to meet your specification.



- Tempered
- Clear
- Laminated
- Low Iron
- Acoustic
- Specialty Glass

## Hardware Options

ZONA also works with a variety of decorative and specialized hardware manufacturers to meet the requirements of every project. Contact our team to discuss available options.

### LADDER PULLS



### RECESSED PULLS



### LEVER HANDLES

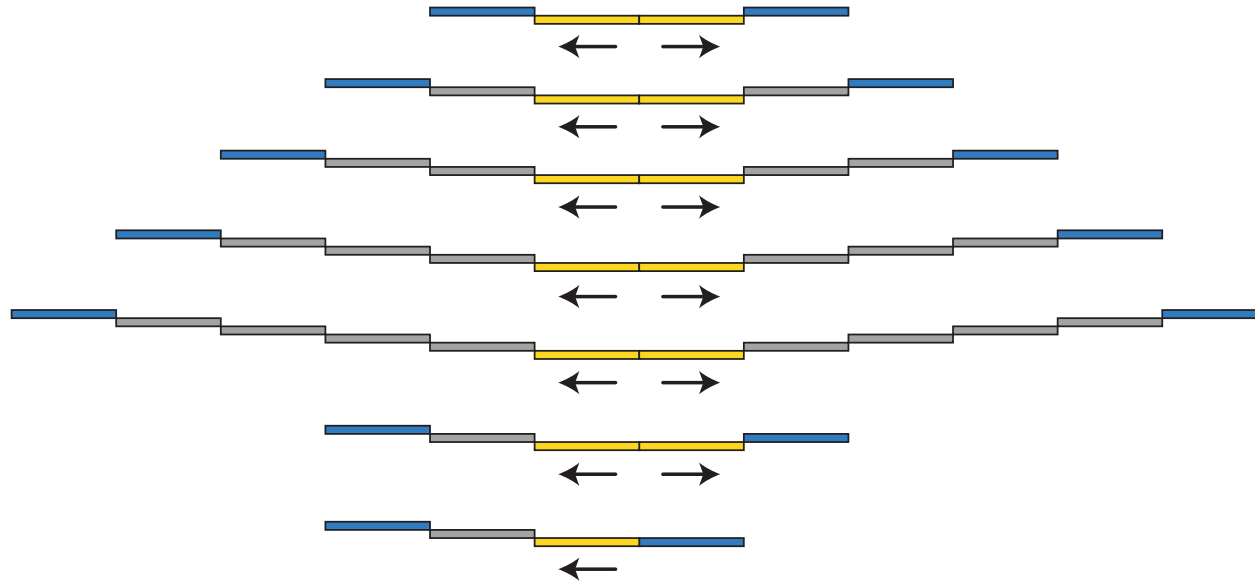


Specialty Configuration Option

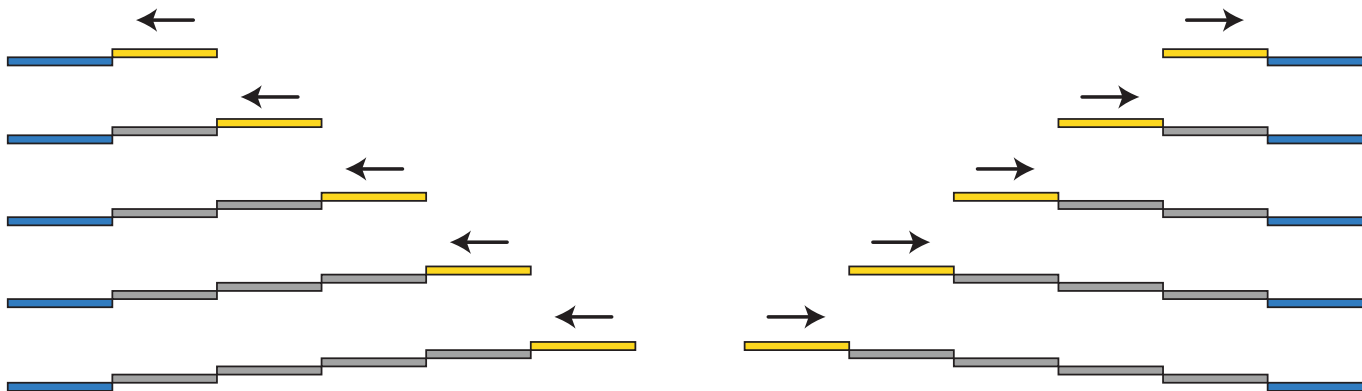
# Standard Configurations

— Fixed    — Standard    — Lead

## Bi-Parting



## Single Stacking



**Note:** This page represents some, but not all available configurations for LYNX Telescopic.

# Specialty Configurations

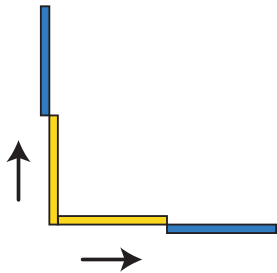
INTERCONNECTED LARGE SINGLE STACK OR BI-PARTING CONFIGURATIONS



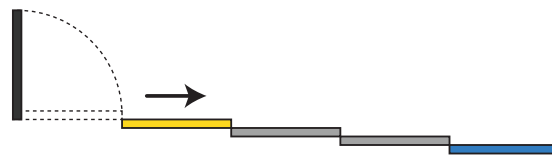
BI-PARTING POCKET SYSTEM



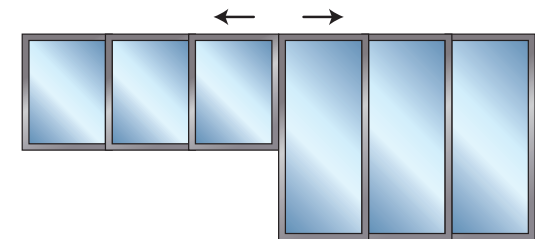
POSTLESS CORNER



OFFSET PASS DOOR



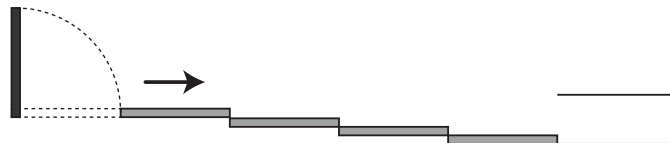
SPLIT-HEIGHT



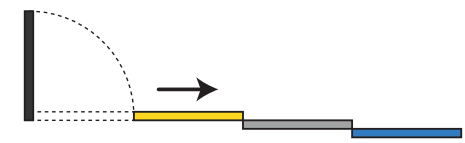
FLUSH POCKET SYSTEM



POCKET SYSTEM WITH PASS DOOR



POSTLESS INTEGRATED PASS DOOR



LYNX TELESCOPIC WALL SYSTEMS



INTERCONNECTED TELESCOPIC



POSTLESS CORNER

INTERCONNECTED LARGE SINGLE



POCKET SYSTEM

## Explore Exceptional **Support & Resources**

- Our team of experts are ready to help you plan your project, detail your space, and optimize your layout.
- Whether your project is big or small, our local sales, installation, and service professionals are there to help!
- Visit [www.zonaglasswallsystems.com](http://www.zonaglasswallsystems.com) to discover the possibilities!



# ZONA<sup>®</sup>

GLASS WALL SYSTEMS

**ZONA Glass Wall Systems, Inc.**

824 East Gate Drive, Suite D, Mt. Laurel, NJ 08054

T: 201.329.6279

[info@zonaglasswallsystems.com](mailto:info@zonaglasswallsystems.com)

[www.zonaglasswallsystems.com](http://www.zonaglasswallsystems.com)



© 2026 - ZONA Glass Wall Systems, Inc.